

20Z-METER TRUCK-MOUNTED SPECIFICATIONS

Length	34' 5"	(10.50m)
Width	8' 2"	(2.50m)
Height	11' 2"	(3.40m)
Wheelbase	225"	(5,715mm)
Front axle weight	10,764 lbs	(4,882kg)
Rear axle weight	27,240 lbs	(12,356kg)
Approx total weight	38,004 lbs	(17,239kg)

Based on Model Kenworth T300 with .12H pump cell.

Weights are approximate and include pump, boom, truck, driver and some fuel.

Varies with options selected.

Dimensions will vary with different truck makes, models and specifications.

BOOM SPECIFICATIONS | Z-FOLD DESIGN

Height & Reach

Vertical reach	63' 10"	(19.46m)
Horizontal reach	53' 11"	(16.43m)
Reach from front of truck*	44' 4"	(13.51m)
Reach depth	36' 7"	(11.15m)
Unfolding height	12' 10"	(3.91m)

4-Section Boom

1st section articulation	96°	
2nd section articulation	188°	
3rd section articulation	260°	
4th section articulation	246°	
1st section length	17' 11"	(5.46m)
2nd section length	11' 8"	(3.56m)
3rd section length	11' 8"	(3.56m)
4th section length	11' 8"	(3.56m)

General Specs

Pipeline Size (ID) metric ends	5"	(125mm)
Rotation	365°	
End hose — length	10' 0"	(3.00m)
End hose — diameter	5"	(125mm)
Outrigger spread L - R — front	11' 2"	(3.40m)
manually pull out & hydraulically extend down		
Outrigger spread L - R — rear	8' 6"	(2.59m)
hydraulically extend down		

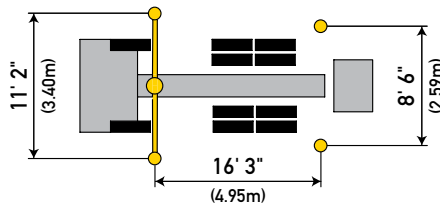
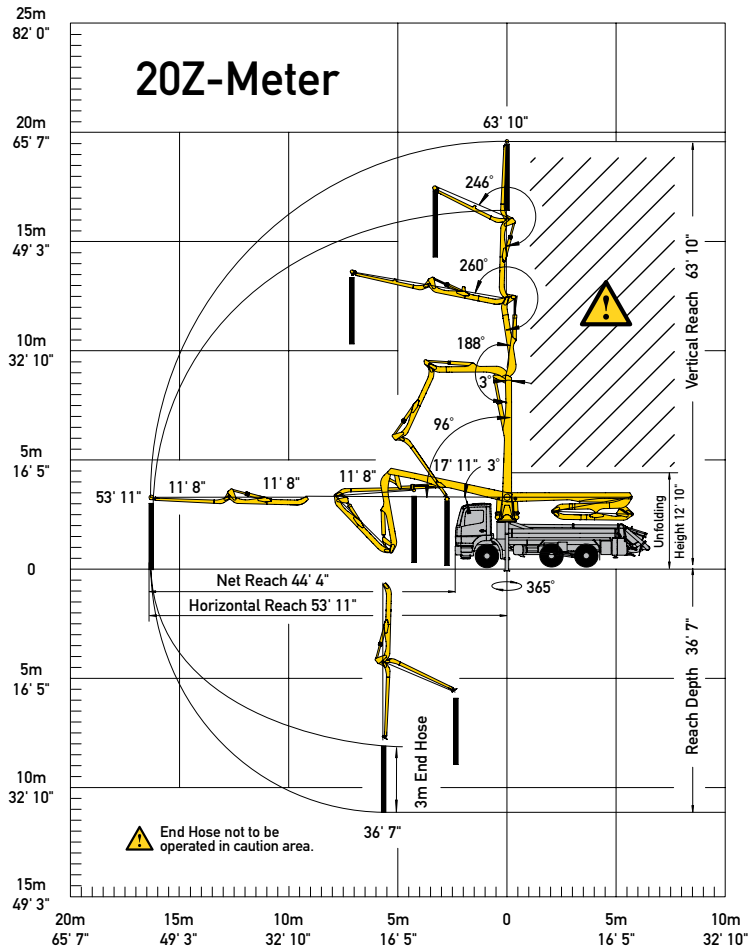
PUMP SPECIFICATIONS

	20Z.09	20Z.12H
Output — rod side	117 yd ³ /hr (90m ³ /hr)	144 yd ³ /hr (110m ³ /hr)
— piston side	78 yd ³ /hr (60m ³ /hr)	97 yd ³ /hr (74m ³ /hr)
Pressure — rod side	1,015 psi (70 bar)	1,189 psi (82 bar)
— piston side	1,537 psi (106 bar)•	1,624 psi (122 bar)•
Material cylinder diameter	8" (200mm)	9" (230mm)
Stroke length	55" (1,400mm)	83" (2,100mm)
Max strokes per minute		
— rod side	36	21
— piston side	25	14
Volume control	0-Full	0-Full
Vibrator	Standard	Standard
Hard-chromed material cylinders	Standard	Standard
Hydraulic system	Free Flow	Free Flow
Hydraulic system pressure	5,075 psi (350 bar)	5,075 psi (350 bar)
Differential cylinder diameter	4.3" (110mm)	5.1" (130mm)
Rod diameter	2.5" (63mm)	3.1" (80mm)
Maximum size aggregate	2.5" (63mm)	2.5" (63mm)
Water tank— pedestal	172 gal (650L)	172 gal (650L)

Maximum theoretical values listed.

* Applies to units mounted on PMA stock truck

• Standard delivery line system rated at max line pressure of 1,233 psi (85 bar)



Photos and drawings are for illustrative purposes only.

Authorized Distributor



Putzmeister

Putzmeister America, Inc. Phone (262) 886-3200
1733 90th Street Toll-free (800) 884-7210
Sturtevant, WI 53177 USA Fax (262) 884-6338

PutzmeisterAmerica.com

pmr@putzam.com