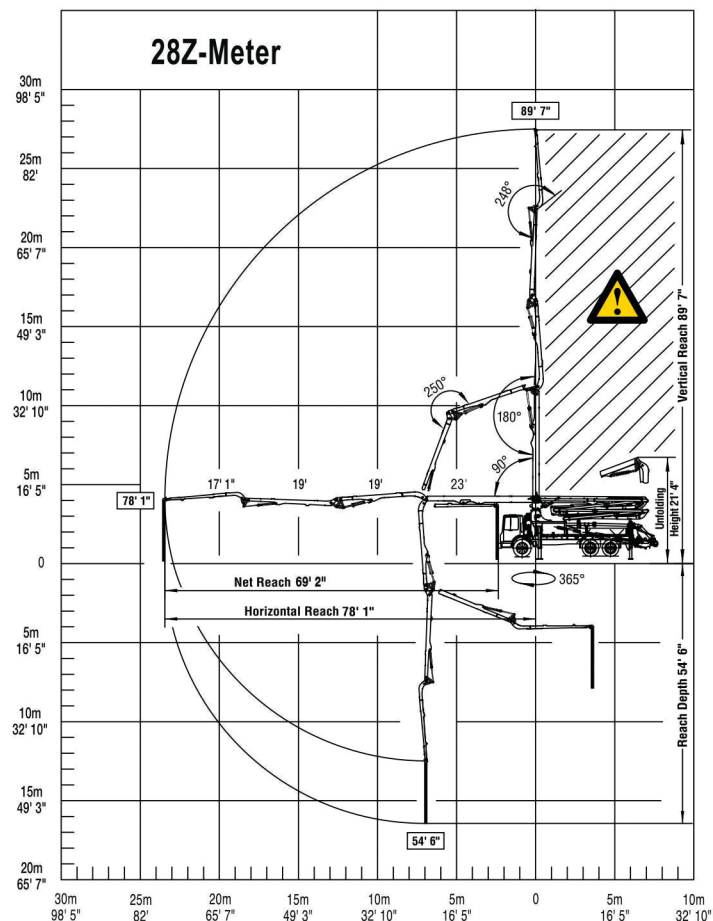
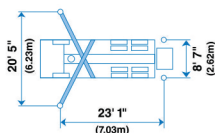


## Range Diagram



⚠ End hose not to be operated in caution area.

Photos and drawings are for illustrative purposes only.  
For available options, please refer to price list.



# Putzmeister

Putzmeister America, Inc. Telephone (262) 886-3200  
1733 90th Street (800) 884-7210  
Sturtevant, WI 53177 USA Facsimile (262) 884-6338  
www.putzmeister.com



12

Authorized Distributor

## 28Z-Meter Truck-Mounted Specifications

Based on Model MACK MRU 613  
with .12L pump cell

Length	33' 1"	(10.08m)
Width	8' 2"	(2.50m)
Height	12' 7"	(3.84m)
Wheelbase	195"	(4,953mm)
Front axle weight	15,776 lbs	(7,156kg)
Rear axle weight	29,524 lbs	(13,392kg)
Approx. total weight	45,300 lbs	(20,548kg)

Weights are approximate and include pump, boom, truck, full hydraulic oil, driver and some fuel. Varies with options selected.

Dimensions will vary with different truck makes, models and specifications.

## Boom Specifications • Multi-Z Design

Height & Reach		
Vertical reach	89' 7"	(27.31m)
Horizontal reach	78' 1"	(23.80m)
Reach from front of truck*	69' 2"	(21.08m)
Reach depth	54' 6"	(16.61m)
Unfolding height	21' 4"	(6.50m)

4-Section Boom		
1st section articulation	90°	
2nd section articulation	180°	
3rd section articulation	250°	
4th section articulation	248°	

1st section length	23'	(7.00m)
2nd section length	19'	(5.80m)
3rd section length	19'	(5.80m)
4th section length	17' 1"	(5.20m)

General Specs		
Pipeline size (ID) metric ends	5"	(125mm)
Rotation	365°	
End hose — length**	10'	(3.00m)
End hose — diameter	5"	(125mm)
Outrigger spread L-R — front telescope diagonally and extend down	20' 5"	(6.23m)
Outrigger spread L-R — rear extend down	8' 7"	(2.62m)

## Pump Specifications†

	28Z.12L	28Z.16H
Output — rod side	142 yd <sup>3</sup> /hr (109m <sup>3</sup> /hr)	210 yd <sup>3</sup> /hr (160m <sup>3</sup> /hr)
piston side	85 yd <sup>3</sup> /hr (65m <sup>3</sup> /hr)	146 yd <sup>3</sup> /hr (112m <sup>3</sup> /hr)
Pressure — rod side	1015 psi (70 bar)	1233 psi (85 bar)
piston side	1624 psi (112 bar) •	1885 psi (130 bar) •
Material cylinder diameter	9" (230mm)	9" (230mm)
Stroke length	83" (2100mm)	83" (2100mm)
Max strokes per minute — rod side	21	31
piston side	13	21
Volume control	0-Full	0-Full
Vibrator	Standard	Standard
Hard-chromed material cylinder	Standard	Standard
Hydraulic system	Free Flow	Free Flow
Hydraulic system pressure	5075 psi (350 bar)	5075 psi (350 bar)
Differential cylinder diameter	5.1" (130mm)	5.5" (140mm)
Rod diameter	3.1" (80mm)	3.1" (80mm)
Maximum size aggregate	2.5" (63mm)	2.5" (63mm)
Water tank	185 gal (700L)	185 gal (700L)

Maximum theoretical values listed

• Standard delivery line system rated at max line pressure of 1233 psi (85 bar)

\* Applies to units mounted on PMA stock truck — MACK MRU 613

\*\* Please follow the end hose weight guidelines listed in the operators manual.

† .09 pump cell also available.