

## 47Z-METER TRUCK-MOUNTED SPECIFICATIONS

Length	42' 6"	(12.92m)
Width	8' 2"	(2.50m)
Height	13' 2"	(4.00m)
Wheelbase	275"	(6,989mm)
Front axle weight	34,500 lbs	(15,600kg)
Rear axle weight	43,600 lbs	(19,800kg)
Approx total weight	78,100 lbs	(35,400kg)

Based on Model MACK MRU 613 with .16H pump cell.

Weights are approximate and include pump, boom, truck, driver and some fuel. Varies with options selected.

Dimensions will vary with different truck makes, models and specifications.

## BOOM SPECIFICATIONS | Z-FOLD DESIGN

### Height & Reach

Vertical reach	151' 3"	(46.10m)
Horizontal reach	138' 1"	(42.09m)
Reach from front of truck*	128' 2"	(39.07m)
Reach depth	105' 8"	(32.21m)
Unfolding height	31' 2"	(9.50m)

### 5-Section Boom

1st section articulation	91°	
2nd section articulation	181°	
3rd section articulation	180°	
4th section articulation	245°	
5th section articulation	234°	
1st section length	29' 2"	(8.89m)
2nd section length	25' 11"	(7.90m)
3rd section length	24' 7"	(7.49m)
4th section length	27' 3"	(8.31m)
5th section length	31' 2"	(9.50m)

### General Specs

Pipeline Size (ID) metric ends	5"	(125mm)
Rotation	365°	
End hose — length	10' 0"	(3.00m)
End hose — diameter	5"—4"	(125–102mm)
Outtrigger spread L - R — front	26' 1"	(7.95m)
hydraulically extend out & down		
Outtrigger spread L - R — rear	29' 6"	(8.99)
hydraulically swing out & extend down		

## PUMP SPECIFICATIONS

### 47Z.16H

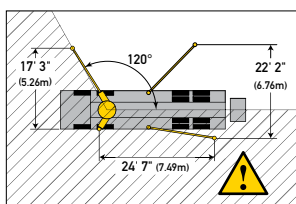
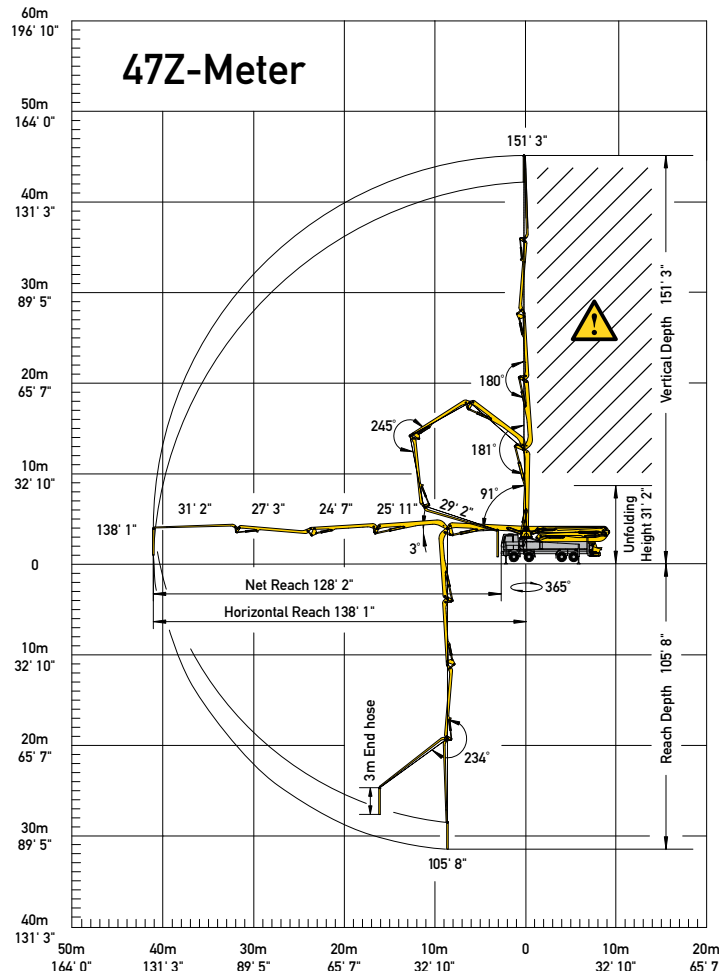
### 47Z.20H

Output	— rod side	210 yd <sup>3</sup> /hr (160m <sup>3</sup> /hr)	—
	— piston side	146 yd <sup>3</sup> /hr (112m <sup>3</sup> /hr)	260 yd <sup>3</sup> /hr (200m <sup>3</sup> /hr)
Pressure	— rod side	1,233 psi (85 bar)	—
	— piston side	1,885 psi (130 bar)*	1,233 psi (85 bar)
Material cylinder diameter		9" (230mm)	11" (280mm)
Stroke length		83" (2,100mm)	83" (2,100mm)
Maximum strokes per minute			
	— rod side	31	—
	— piston side	21	26
Volume control		0-Full	0-Full
Vibrator		Standard	Standard
Hard-chromed material cylinders		Standard	Standard
Hydraulic system		Free Flow	Free Flow
Hydraulic system pressure	5,075 psi (350 bar)		5,075 psi (350 bar)
Differential cylinder diameter	5.5" (140mm)		5.5" (140mm)
Rod diameter	3.1" (80mm)		3.1" (80mm)
Maximum size aggregate	2.5" (63mm)		2.5" (63mm)
Water tank — pedestal	40 gal (145L)		40 gal (145L)
— outrigger	153 (580L)		153 gal (580L)

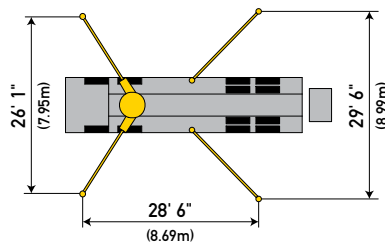
Maximum theoretical values listed.

\* Applies to units mounted on PMA stock truck — MACK MRU 613

• Standard delivery line system rated at max line pressure of 1,233 psi (85 bar)



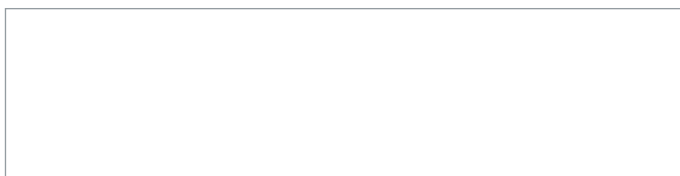
With one-sided support (OSS) 120°



⚠ End hose not to be operated in caution area.

Photos and drawings are for illustrative purposes only.

Authorized Distributor



# Putzmeister

Putzmeister America, Inc. Phone (262) 886-3200  
1733 90th Street Toll-free (800) 884-7210  
Sturtevant, WI 53177 USA Fax (262) 884-6338

[PutzmeisterAmerica.com](http://PutzmeisterAmerica.com)

[pmr@putzam.com](mailto:pmr@putzam.com)