

56Z-METER TRUCK-MOUNTED SPECIFICATIONS

| | | |
|---------------------|-------------|------------|
| Length | 47' 11" | (14.48m) |
| Width | 8' 2" | (2.50m) |
| Height | 13' 1" | (3.99m) |
| Wheelbase | 330" | (8,382mm) |
| Front axle weight | 52,773 lbs | (23,938kg) |
| Rear axle weight | 48,747 lbs | (22,111kg) |
| Approx total weight | 100,080 lbs | (45,396kg) |

Based on Model MACK MRU 613 with .16H pump cell.

Weights are approximate and include pump, boom, truck, driver and full fuel. Varies with options selected.

Dimensions will vary with different truck makes, models and specifications.

BOOM SPECIFICATIONS | Z-FOLD DESIGN

Height & Reach

| | | |
|----------------------------|----------|----------|
| Vertical reach | 180' 10" | (55.12m) |
| Horizontal reach | 163' 10" | (49.94m) |
| Reach from front of truck* | 152' 6" | (46.48m) |
| Reach depth | 132' 3" | (40.30m) |
| Unfolding height | 51' 3" | (15.62m) |

5-Section Boom

| | |
|--------------------------|------|
| 1st section articulation | 90° |
| 2nd section articulation | 180° |
| 3rd section articulation | 180° |
| 4th section articulation | 245° |
| 5th section articulation | 210° |

| | | |
|--------------------|--------|----------|
| 1st section length | 34' 1" | (10.40m) |
| 2nd section length | 26' 8" | (8.12m) |
| 3rd section length | 30' 6" | (9.30m) |
| 4th section length | 37' 8" | (11.48m) |
| 5th section length | 38' 9" | (11.80m) |

General Specs

| | | |
|---------------------------------------|--------|----------|
| Pipeline Size (ID) metric ends | 5" | (125mm) |
| Rotation | 365° | |
| End hose — length | 10' 0" | (3.00m) |
| End hose — diameter | 5" | (125mm) |
| Outrigger spread L - R — front | 30' 6" | (9.30m) |
| hydraulically extend out & down | | |
| Outrigger spread L - R — rear | 40' 2" | (12.30m) |
| hydraulically swing out & extend down | | |

PUMP SPECIFICATIONS

56Z.16H

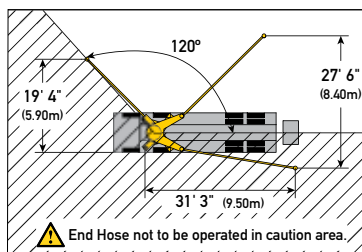
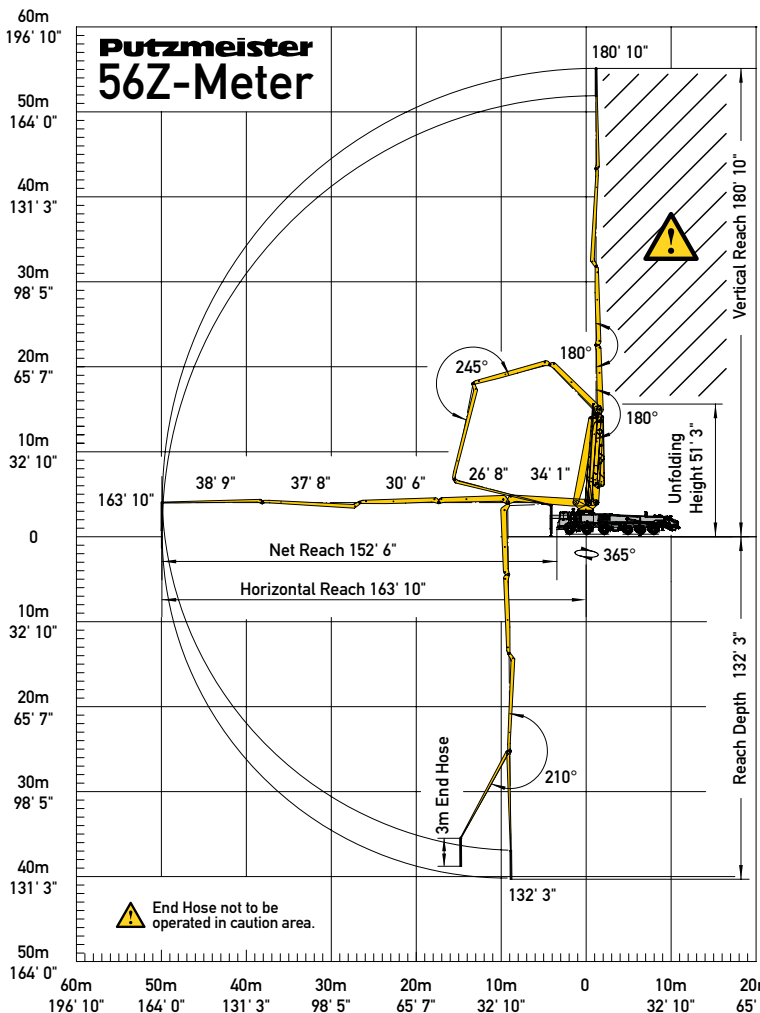
56Z.16H LS

| | | | |
|---------------------------------|---------------|---|---|
| Output | — rod side | 210 yd ³ /hr (160m ³ /hr) | — |
| | — piston side | 146 yd ³ /hr (112m ³ /hr) | 210 yd ³ /hr (160m ³ /hr) |
| Pressure | — rod side | 1,233 psi (85 bar) | — |
| | — piston side | 1,885 psi (130 bar)* | 1,233 psi (85 bar) |
| Material cylinder diameter | | 9" (230mm) | 10" (250mm) |
| Stroke length | | 83" (2,100mm) | 83" (2,100mm) |
| Maximum strokes per minute | | | |
| | — rod side | 31 | — |
| | — piston side | 21 | 26 |
| Volume control | | 0-Full | 0-Full |
| Vibrator | | Standard | Standard |
| Hard-chromed material cylinders | | Standard | Standard |
| Hydraulic system | | Free Flow | Free Flow |
| Hydraulic system pressure | | 5,075 psi (350 bar) | 5,075 psi (350 bar) |
| Differential cylinder diameter | | 5.5" (140mm) | 5.5" (140mm) |
| Rod diameter | | 3.1" (80mm) | 3.1" (80mm) |
| Maximum size aggregate | | 2.5" (63mm) | 2.5" (63mm) |
| Water tank — pedestal | | 185 gal (700L) | 185 gal (700L) |

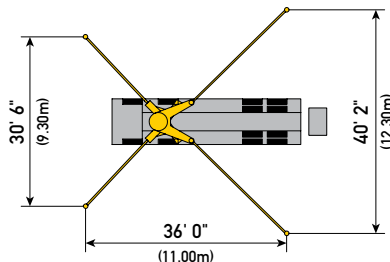
Maximum theoretical values listed.

* Applies to units mounted on PMA stock truck — MACK MRU 613

• Standard delivery line system rated at max line pressure of 1,233 psi (85 bar)

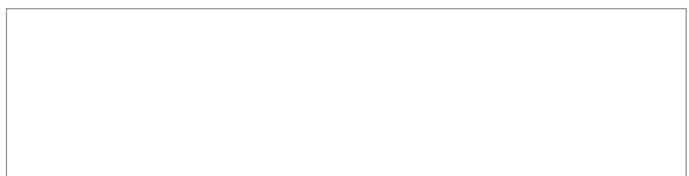


With one-sided support (OSS) 120°



Photos and drawings are for illustrative purposes only.

Authorized Distributor



Putzmeister

Putzmeister America, Inc.
1733 90th Street
Sturtevant, WI 53177 USA

Phone (262) 886-3200
Toll-free (800) 884-7210
Fax (262) 884-6338

PutzmeisterAmerica.com

pmr@putzam.com